

# Franklin Natural Resources Fund

**N (acc) EUR: LU0300742037**

**Sector | Factsheet as of 31 July 2025**

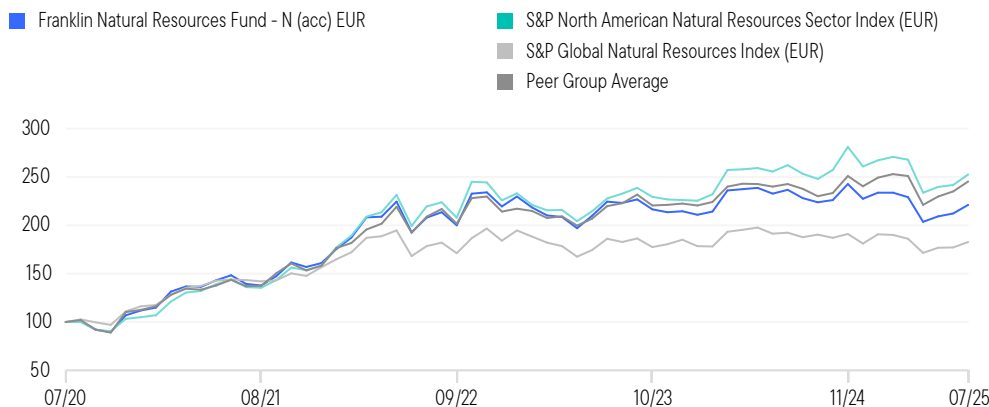
**This is a marketing communication. Please refer to the prospectus of the UCITS and to the KID before making any final investment decisions.**

## Investment Overview

To seek long-term investment growth, mainly through growth of capital and, income. The Fund mainly invests in equities and depositary receipts of companies of any market capitalisation active in natural resources and related technology and services. This may include fossil fuels, renewable energy, agriculture, forestry, environmental protection, paper and chemicals. These investments may be from anywhere in the world, including emerging markets.

**Past performance does not predict future returns.**

## Performance Over 5 Years in Share Class Currency (%)



## Discrete Annual Performance (%)

	07/24	07/23	07/22	07/21	07/20	07/19	07/18	07/17	07/16	07/15
	07/25	07/24	07/23	07/22	07/21	07/20	07/19	07/18	07/17	07/16
N (acc) EUR	-6.48	5.34	8.01	49.28	39.33	-36.58	-19.42	15.78	-7.48	-2.66
S&P North American Natural Resources Sector Index (EUR)	-3.62	15.02	3.82	61.15	36.22	-26.27	-12.73	17.87	-4.58	2.78
S&P Global Natural Resources Index (EUR)	-4.91	3.40	4.27	24.37	43.46	-16.86	-2.64	19.94	10.91	1.22
Peer Group Average	1.13	10.68	5.21	52.35	37.24	-33.41	-8.91	16.20	-3.43	-9.32

## Total Returns (%)

	Cumulative						Average Annual				Inception Date
	1-Mo	3-Mo	YTD	1-Yr	3-Yr	5-Yr	Inception	3-Yr	5-Yr	Inception	
N (acc) EUR	4.24	8.67	-2.64	-6.48	6.41	121.33	-8.54	2.09	17.22	-0.49	12/07/2007
S&P North American Natural Resources Sector Index (EUR)	4.49	8.04	-3.16	-3.62	15.09	152.66	111.20	4.79	20.37	4.23	—
S&P Global Natural Resources Index (EUR)	3.31	6.70	0.96	-4.91	2.52	82.91	93.67	0.83	12.84	3.73	—
Peer Group Average	4.39	10.98	2.04	1.13	17.75	146.19	34.94	5.60	19.74	1.67	—
Quartile Ranking	3	3	2	3	4	3	—	4	3	—	—

**The value of shares in the Fund and income received from it can go down as well as up, and investors may not get back the full amount invested.**

Performance details provided are in share class currency, include the reinvested dividends gross of tax and are net of management fees. Sales charges, taxes and other locally applied costs have not been deducted. The fund's returns may increase or decrease as a result of changes to foreign exchange rates.

Up to date performance figures can be found on our website.

When performance for either the portfolio or its benchmark has been converted, different foreign exchange closing rates may be used between the portfolio and its benchmark.

## Fund Overview

Umbrella	Franklin Templeton Investment Funds
Fund Base Currency	USD
Fund Inception Date	12/07/2007
Share Class Inception Date	12/07/2007
Minimum Investment	USD 1000
ISIN	LU0300742037
Bloomberg	FNTRNAE LX
Morningstar Peer Group	Sector Equity Energy

## Benchmark(s) and Type

S&P North American Natural Resources Sector Index	Comparator
S&P Global Natural Resources Index	Comparator

## Charges

Maximum Initial Charge	3.00%
Exit Charge	—
Ongoing Charges Figure	2.57%
Performance Fee	—

The charges are the fees the Fund charges to investors to cover the costs of running the Fund. Additional costs, including transaction fees, will also be incurred. These costs are paid out by the Fund, which will impact on the overall return of the Fund. Fund charges will be incurred in multiple currencies, meaning that payments may increase or decrease as a result of currency exchange fluctuations.

## Fund Characteristics

	Fund
NAV-N (acc) EUR	€6.64
Total Net Assets (USD)	\$221.51 Million
Number of Issuers	83
Average Market Cap (Millions USD)	\$86,849
Historical EPS Growth (3 Yr)	7.13%
Estimated 3-5 Year EPS Growth	11.74%
Price to Earnings (12-Month Forward)	15.11x
P/E to Growth	1.16x
Standard Deviation (5 Yr)	21.59%

Top Equity Issuers (% of Total)

	Fund
EXXON MOBIL CORP	5.05
CONOCOPHILLIPS	4.47
CHEVRON CORP	4.07
NEWMONT CORP	3.63
BHP GROUP LTD	2.98
COTERRA ENERGY INC	2.82
CORTEVA INC	2.45
LINDE PLC	2.41
BARRICK MINING CORP	2.40
AIR PRODUCTS AND CHEMICALS INC	2.30

Geographic Allocation (% of Total)

	S&P North American Natural Resources Fund	Sector Index
United States	59.84	77.44
Canada	21.89	22.56
Australia	5.88	0.00
United Kingdom	4.82	0.00
Brazil	1.74	0.00
France	1.69	0.00
Norway	0.92	0.00
Denmark	0.80	0.00
South Africa	0.08	0.00
Cash & Cash Equivalents	2.35	0.00

Sector Allocation (% of Total)

	S&P North American Natural Resources Fund	Sector Index
Oil & Gas Exploration & Production	16.62	17.89
Integrated Oil & Gas	14.97	24.35
Gold	11.19	12.01
Diversified Metals & Mining	9.55	0.96
Oil & Gas Storage & Transportation	8.08	16.92
Oil & Gas Equipment & Services	6.77	5.65
Copper	6.30	2.11
Oil & Gas Refining & Marketing	4.09	5.76
Others	20.09	14.35
Cash & Cash Equivalents	2.35	0.00

Market Cap Breakdown (% of Equity) (USD)

	Fund
<2.0 Billion	6.59
2.0-5.0 Billion	3.06
5.0-10.0 Billion	4.05
10.0-25.0 Billion	15.22
25.0-50.0 Billion	24.21
>50.0 Billion	46.57
N/A	0.31

Portfolio Management

	Years with Firm	Years of Experience
Fred Fromm, CFA	33	33
Steve Land, CFA	28	28
Matthew Adams, CFA	19	27

What are the Risks?

The Fund does not offer any capital guarantee or protection and you may not get back the amount invested. The Fund is subject to the following risks which are materially relevant: **Emerging markets risk:** the risk related to investing in countries that have less developed political, economic, legal and regulatory systems, and that may be impacted by political/economic instability, lack of liquidity or transparency, or safekeeping issues. **Foreign Currency risk:** the risk of loss arising from exchange-rate fluctuations or due to exchange control regulations. **Liquidity risk:** the risk that arises when adverse market conditions affect the ability to sell assets when necessary. Such risk may be triggered by (but not limited to) unexpected events such as environmental disasters or pandemics. Reduced liquidity may have a negative impact on the price of the assets. **Securities Lending risk:** the risk that default or insolvency of the borrower of securities lent by a Fund may lead to losses if collateral received realises less than the values of securities lent. Complete information on the risks of investing in the Fund are set out in the Fund's prospectus.

Glossary

**Ongoing Charges Figure (OCF):** The Ongoing Charges Figure (OCF) includes the fees paid to the management company, the investment manager and the depository, as well as certain other expenses. The OCF is calculated by taking the relevant main material costs paid out over the 12-month period indicated and dividing them by the average net assets over the same period. The OCF does not include all expenses paid by the fund (for example, it does not include what the fund pays for buying and selling securities). For a comprehensive list of the types of costs deducted from fund assets, see the prospectus. For recent all-in annual costs, as well as hypothetical performance scenarios that show the effects that different levels of return could have on an investment in the fund, where applicable, see the KID. **Comparator:** Benchmark is used for comparing Fund performance, but is not a constraint to Fund Investment. **Weighted Average Market Capitalization:** A determination of a company's value, calculated by multiplying the total number of company stock shares outstanding by the price per share. For a portfolio, the value represents a weighted average based on the stocks held. **Historical 3 Yr EPS Growth:** A measure of the growth of earnings per share over a trailing 3 year period. For a portfolio, the value represents a weighted average of the stocks it holds. **Estimated 3-5 Yr EPS Growth:** An estimated measure of the growth of earnings per share over a forward-looking period. For a portfolio, the value represents a weighted average of the stocks it holds. **Price to Earnings (12-month Forward):** A measure of the price to earnings ratio for a stock using the forecasted earnings for the next 12 months. For a portfolio, the value represents a weighted average of the stocks it holds. **P/E to Growth:** A ratio used to determine a stock's value while taking into account earnings growth. For a portfolio, the value represents a weighted average of the stocks it holds. **Standard Deviation:** Measure of the degree to which a fund's return varies from the average of its previous returns. The larger the standard deviation, the greater the likelihood (and risk) that a fund's performance will fluctuate from the average return.

Portfolio Data Information

Holdings are provided for information purposes only and should not be deemed a recommendation to buy or sell the securities mentioned.

### Important Information

This material is intended to be of general interest only and should not be construed as investment advice. It does not constitute legal or tax advice and it is not an offer for shares or an invitation to apply for shares of the Luxembourg-domiciled SICAV Franklin Templeton Investment Funds (the "Fund" or "FTIF"). For the avoidance of doubt, if you make a decision to invest, you will be buying units/shares in the fund and will not be investing directly in the underlying assets of the fund.

Franklin Templeton ("FT") provides no guarantee or assurance that the Fund's investment objective will be attained. The value of shares in the Fund and income received from it can go down as well as up, and investors may not get back the full amount invested. **Past performance does not predict future returns.** Currency fluctuations may cause the value of a Fund's investments to diminish or increase.

FT shall not be liable to any user of this document or to any other person or entity for the inaccuracy of information or any errors or omissions in its contents, regardless of the cause of such inaccuracy, error or omission. Any opinions expressed are the author's at publication date and they are subject to change without prior notice. Any research and analysis contained in this material has been procured by FT for its own purposes and is provided to you only incidentally. Data from third party sources may have been used in the preparation of this document and FT has not independently verified, validated or audited such data.

No shares of the Fund may be directly or indirectly offered or sold to residents of the United States of America. Shares of the Fund are not available for public distribution in all jurisdictions and prospective investors, who are not financial professionals, should consult their financial advisor before deciding to invest. The Fund may use financial derivatives or other instruments which may entail specific risks more fully described in the Fund's Documents.

Subscriptions to shares of the Fund should only be made on the basis of the Fund's current Prospectus, and, where available, the relevant KID, accompanied by the latest available audited annual report and the latest semi-annual report if published thereafter. These documents can be found on our website at [www.franklinresources.com/all-sites](http://www.franklinresources.com/all-sites), obtained, free of charge, from your local FT representative or can be requested via FT's European Facilities Service which is available at [www.eifs.lu/franklintempleton](http://www.eifs.lu/franklintempleton). The Fund's documents are available in English, Arabic, French, German, Italian, Polish and Spanish.

In addition, a Summary of Investor Rights is available from [www.franklintempleton.lu/summary-of-investor-rights](http://www.franklintempleton.lu/summary-of-investor-rights). The summary is available in English.

The sub-funds of FTIF are notified for marketing in multiple EU Member States under the UCITS Directive. FTIF can terminate such notifications for any share class and/or sub-fund at any time by using the process contained in Article 93a of the UCITS Directive.

Franklin Templeton International Services S.à r.l. – Supervised by the Commission de Surveillance du Secteur Financier - 8A, rue Albert Borschette, L-1246 Luxembourg - Tel: +352 46 66 67-1 - Fax: +352 46 66 76.

Investors who understand the risks of the Fund and plan to invest for at least 5 years. The Fund may appeal to investors who are looking for long-term investment growth, are interested in a thematic exposure to equity markets as part of a diversified portfolio, have a high risk profile and can tolerate significant short-term changes in the share price.

**Product availability** The Fund is available to all investors with at least basic investment knowledge, through a wide range of distribution channels, with or without the need for advice.

**CFA®** and **Chartered Financial Analyst®** are trademarks owned by CFA Institute.

© **Morningstar, Inc.** All rights reserved. The information contained here in (1) is proprietary to Morningstar and/or its content providers; (2) may not be copied or distributed; and (3) is not warranted to be accurate, complete or timely. Neither Morningstar nor its content providers are responsible for any damages or losses arising from any use of this information.

Indices are unmanaged, and one cannot invest directly in an index. They do not reflect any fees, expenses or sales charges. Important data provider notices and terms available at [www.franklintempletondatasources.com](http://www.franklintempletondatasources.com). Source: © 2025 S&P Dow Jones Indices LLC. All rights reserved.

**In Europe** (excluding Poland & Switzerland), this financial promotion is issued by Franklin Templeton International Services S.à r.l. - Supervised by the Commission de Surveillance du Secteur Financier - 8A, rue Albert Borschette, L-1246 Luxembourg - Tel: +352-46 66 67-1 - Fax: +352-46 66 76. **In Switzerland**, issued by Franklin Templeton Switzerland Ltd, Stockerstrasse 38, CH-8002 Zurich. Paying agent in Switzerland is BNP Paribas Securities Services, Paris, succursale de Zurich, Selnaustrasse 16, 8002 Zurich. **In Poland**, Templeton Asset Management (Poland) TFI S.A.; Rondo ONZ 1; 00-124 Warsaw. **In the Middle East**, provided by Franklin Templeton Investments (ME) Limited, authorized and regulated by the Dubai Financial Services Authority. Franklin Templeton Investments, The Gate, East Wing, Level 2, Dubai International Financial Centre, P.O. Box 506613, Dubai, U.A.E., Tel: +9714-4284100 Fax: +9714 4284140. **In Canada**, this material may be distributed in Canada by Franklin Templeton Investments Corp.

© 2025 Franklin Templeton. All rights reserved.